

PATRIOT PLACE
APARTMENTS FOR VETERANS
A Columbia Housing Authority Partnership with the Truman VA

Completed April 2016



Affordable Housing Initiative

Affordable ❖ Accessible ❖ Energy-Efficient ❖ Healthy ❖ Safe ❖ Well-Maintained

PATRIOT PLACE

APARTMENTS FOR VETERANS

A Columbia Housing Authority Partnership with the Truman VA



COLUMBIA HOUSING AUTHORITY & PARTNERS SUPPORTING OUR VETERANS!

Deluxe Inn Purchased on July 1st, 2014





OCTOBER 2014 – ALL ROOMS & THE BASEMENT HAVE BEEN CLEARED OF ALL TRASH AND DEBRIS.



FEBRUARY 28TH & MARCH 1ST, 2014 – TEAM RUBICON & COMMUNITY VOLUNTEERS REMOVED DRYWALL, CARPETING, DOORS & PLUMBING FIXTURES. ADDITIONAL 11 TONS (22,000LBS) OF TRASH REMOVED



REMEDICATION/ABATEMENT WORK
COMPLETED – JULY 23RD, 2015



DEMO WORK COMPLETED



FRAMING STARTED – AUGUST 24TH, 2015



DOMESTIC WATER LINE
INSTALLATION STARTED



9/2/2015 - STORM DRAIN SYSTEM
COMPLETED



EXTERIOR LOAD BEARING WALLS COMPLETED.
ROOF TRUSSES READY TO BE INSTALLED



ROOFING TRUSSES - INSTALLATION
STARTED SOUTH WING - 9/22/15



FRAMING STARTED ON THE NEW
ADDITION



ROOF DECKING STARTED AND THE
PRECAST ROOFING WAS REMOVED FOR
THE 2ND & 3RD FLOOR ADDITION



PLUMBING WORK CONTINUES IN THE
BASEMENT



WINDOW INSTALLATION STARTED ON
THE NORTH AND SOUTH WINGS



SHINGLE INSTALLATION STARTED –
10/7/2015





INTERIOR FRAMING



INTERIOR DRYWALL













NEW WATER MAIN SERVICE INSTALLED



NEW HAND RAILING INSTALLATION



DOMESTIC BOILERS (HOT WATER)

FURNISHED APARTMENT



FURNISHED APARTMENT



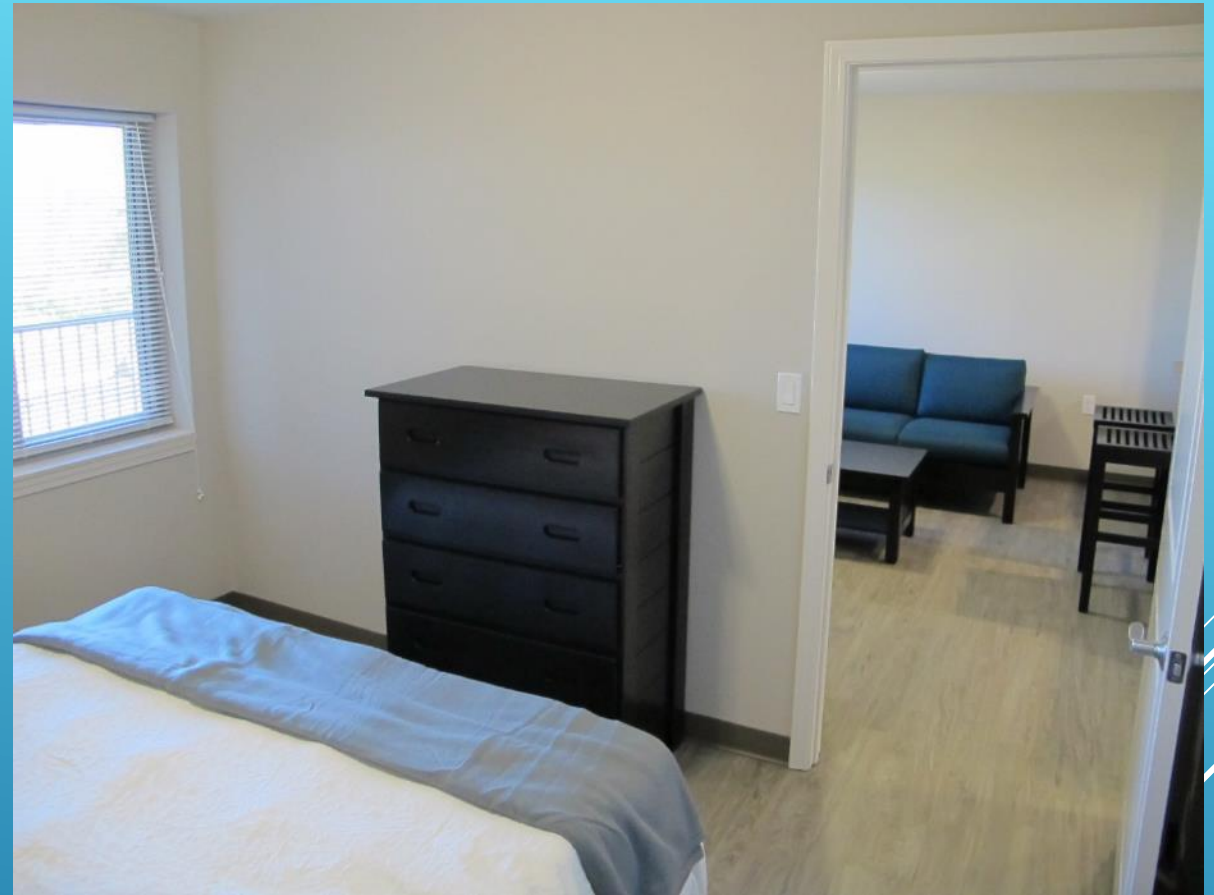
FURNISHED APARTMENT



FURNISHED APARTMENT



FURNISHED APARTMENT



FITNESS ROOM, COMPUTER LAB AND LAUNDRY



FINISHED EXTERIOR





DEDICATION CELEBRATION





DEDICATION
CELEBRATION





DEDICATION CELEBRATION



PICNIC PAVILION



PICNIC PAVILION



PATRIOT PLACE



OWNER: COLUMBIA HOUSING AUTHORITY
DEVELOPER: CHA AFFORDABLE HOUSING DEVELOPMENT, LLC
ARCHITECT: SIMON ASSOCIATES, INC.



Announce the Development of this Site in cooperation with the
MISSOURI HOUSING DEVELOPMENT COMMISSION



25 NEW SINGLE FAMILY UNITS

Section 3 Project - For employment and/or contracting opportunities
Please contact E.M. Harris Construction Co. - 314.436.4426

PATRIOT PLACE

APARTMENTS FOR VETERANS

A Columbia Housing Authority Partnership with the Truman VA



SUGAR CREEK CAPITAL
A forward approach

PATRIOT PLACE



APARTMENTS FOR VETERANS

A Columbia Housing Authority Partnership with the Truman VA

TIME TO MOVE IN!